

**S.E.E.N.,  
Inc.**



- ❖ 501 (c)(3) nonprofit
- ❖ Been in the research phase, collaboration phase (with other faith based children homes nation wide), and formation of board of trustees for over 1 ½ years.
- ❖ Foundation has been built
  - ❖ ready to launch website and make our needs known to the public



# MISSION

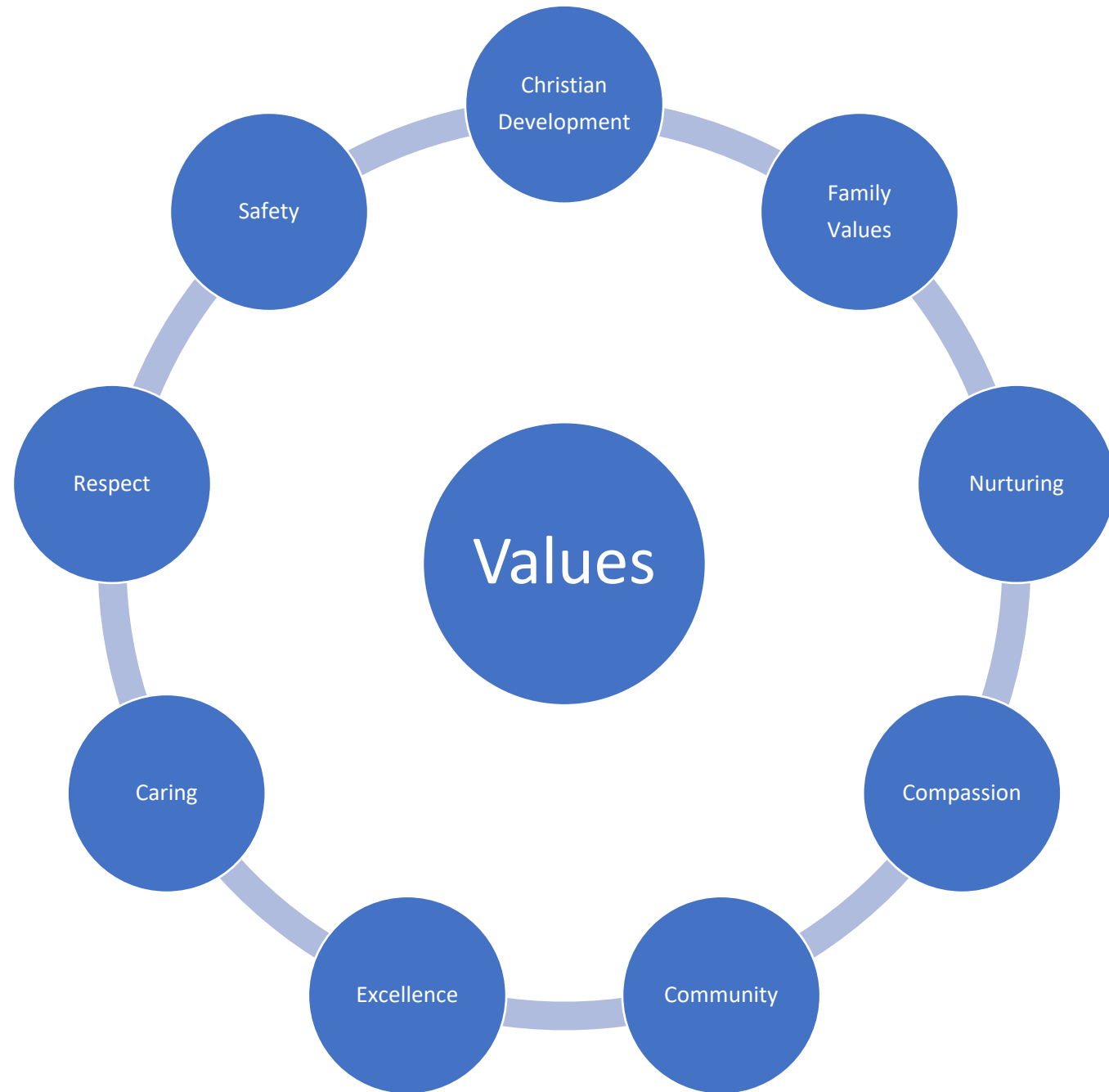
Provide a restorative community campus for vulnerable children and youth by working in a Christian partnership with local resource agencies and community members.

"You are the God

- Then she (Hagar) called the name of the Lord who spoke to her, "You are a God who sees"; for she said, " I have now seen the one who sees me."

who sees me..."

*Genesis 16:13*



Christian  
Development

Family  
Values

Nurturing

Compassion

Community

Excellence

Caring

Respect

Safety

Values

2023

- 52 children were removed from households in Harrison County
  - Any child that Department of Child Services (DCS) has removed from the care of a parent, guardian, or custodian within a household.
- Once a child is removed:
  - Relative care
  - Close friends/anyone with direct contact with child (kinship placement)
  - Foster care home

*Indiana Youth Institute*

*IYI.org*

# Problems

- Generational issues.
  - Child placed within another trauma home
- Family members aren't getting support to take in children.
- Most of these children need specialized treatment and care.
- Shortage of foster homes.
- Children are being placed out of county
  - Children being taken away from their school, friends, community, etc.
  - Different county, different country

- Child Care Institution (CCI)
  - Work with DCS to obtain foster care licensing
  - On campus homes for emergency placement, short term, and long term stay
- Train Trauma Informed Care House Parents
- Mental Health services
- Church sponsorships
- On campus school







NEXT STEPS

&

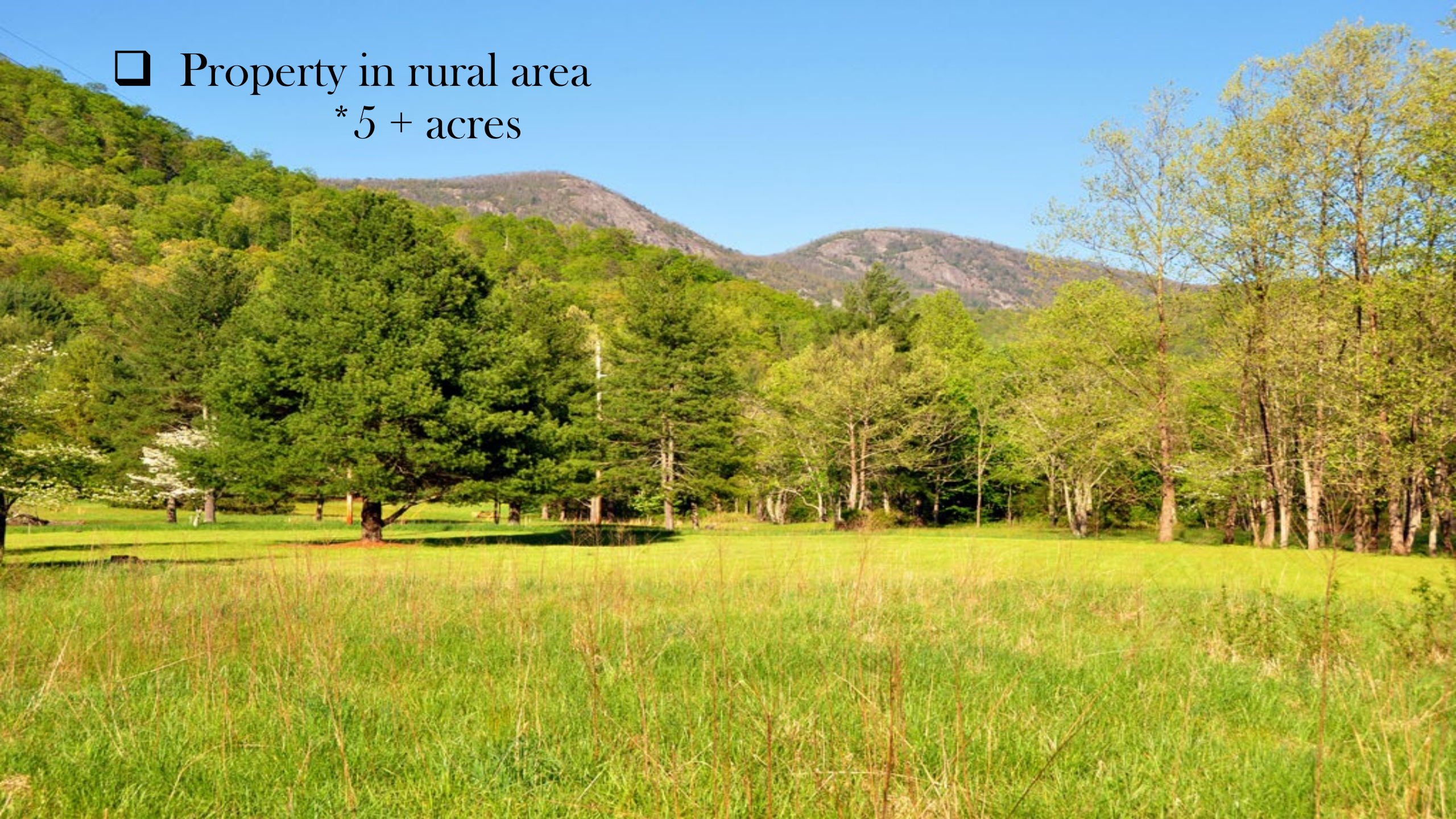
NEEDS

A young boy with short, light brown hair is shown from the chest up. He has his eyes closed and a serene expression, with his hands clasped together in a prayer position. He is holding a small, dark-colored book with both hands. The background is a plain, light color. The word "PRAYER" is overlaid in a blue, serif font across the center of the image.

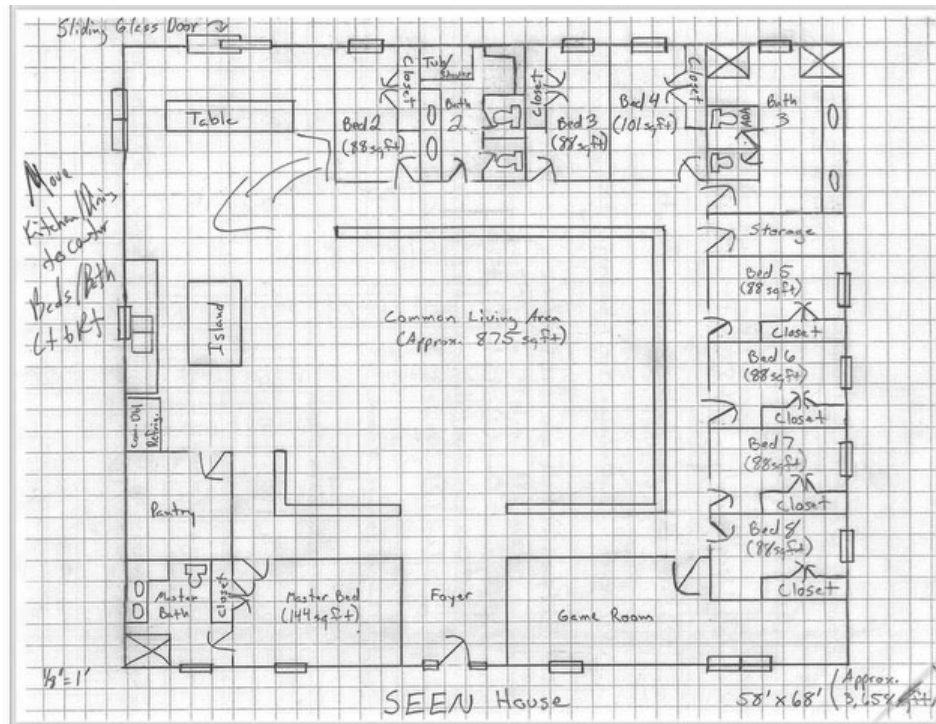
PRAYER

BLE

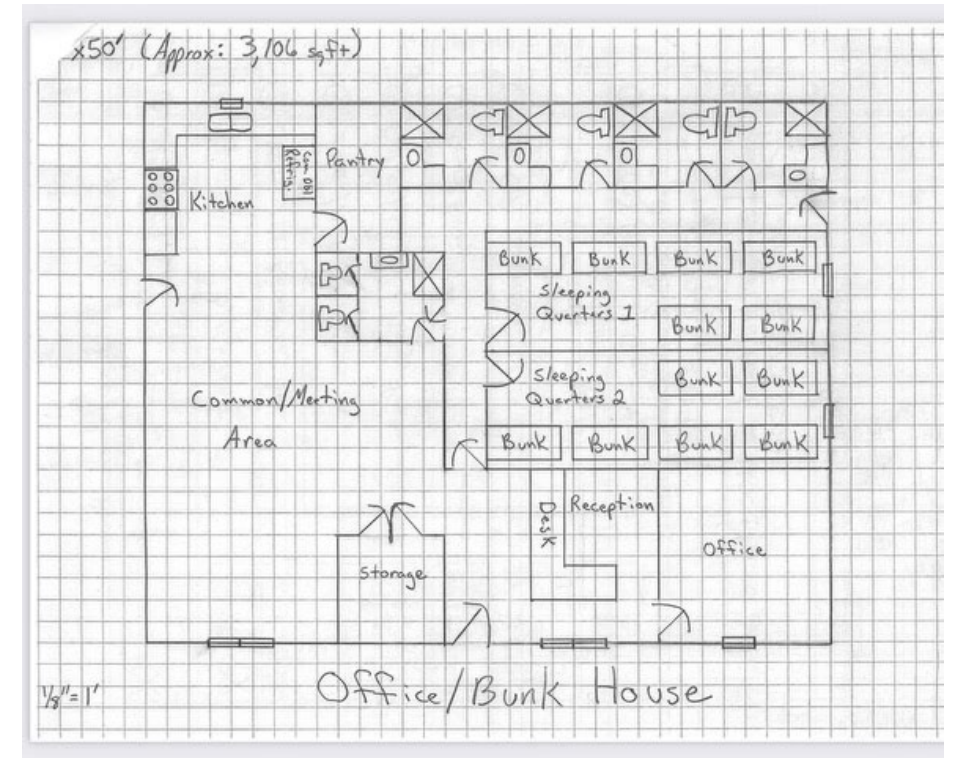
□ Property in rural area  
\* 5 + acres



# □ Complete architectural plans



Rough  
Draft



Website: [www.seen-inc.org](http://www.seen-inc.org)

Mailing Address: P.O. Box 174  
Elizabeth, IN. 47117

